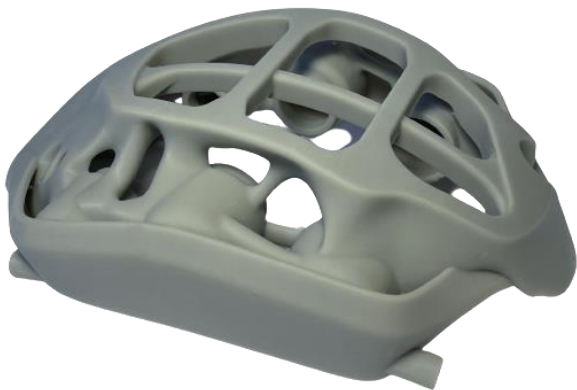


PR221-LCD

Prototyping and Modeling Material

LCD DLP

PR221-LCD provides reliable, accurate, high-resolution printing for modeling and prototyping applications. The material features low water absorption, is compatible with electroplating processes, and is a suitable material for LCD and DLP printing methods.



KEY PROPERTIES

| PR221-LCD | |
|----------------------------|-----------|
| Liquid | |
| Appearance | Grey |
| Viscosity @ 25°C | 250 cP |
| Material | |
| Tensile Modulus | 46 MPa |
| Tensile Strength | 3,170 MPa |
| Tensile Elongation | 5% |
| Water Absorption (24 hrs.) | 0.25% |

KEY FEATURES



- Low viscosity
- Fast & accurate printing
- Low water absorption
- Electroplatable

APPLICATIONS

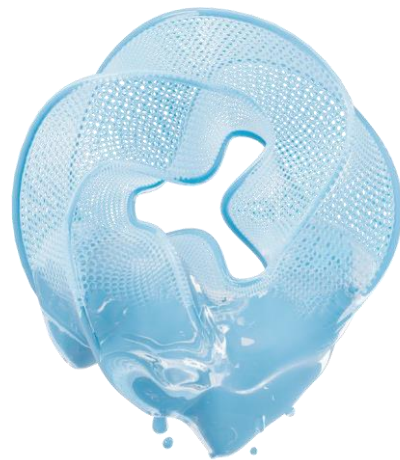


- Prototyping
- Modeling
- Electroplating

MAIN MARKETS



- Industrial
- Consumer goods



Sartomer® and N3xtDimension® are registered trademarks of Arkema. — © 2023 Arkema. All rights reserved. IMAGE COPYRIGHT ISOBAR & ADOBESTOCK